

Role of CMPDIL IN EXPLORATION

- CMPDI has completed over 500 coal exploration projects in India in all types of terrain and geological set-up. This has resulted in providing 80 billion tonnes of coal. CMPDI has expanded its activities to Manganese, Iron Ore and Rock Phosphate. Exploration has also been carried out in Tanzania. Annually, CMPDI carries out about 200,000 meters of drilling spread over seven States in India through 23 drilling camps.

- CMPDI has envisaged to carry out 29.35 lakh metres of drilling during five years of XI
- plan period through in-house drills as well as by outsourcing as against about 10 lakhs
- metres of drilling carried out during X plan period. During XI plan period, CMPDI will be
- preparing about 127 project reports resulting in capacity addition for coal production of
- about 367 Mt and firming up project planning needs for XII plan.

Drilling Performance in 2009-10:

1.1.1 CMPDI deployed its departmental resources for exploration of CIL/Non-CIL/Promotional

blocks whereas State Govts of MP and Orissa deployed resources in CIL blocks only. Besides, four other contractual agencies have also deployed resources for detailed drilling/exploration in 19 CIL/Non-CIL blocks. A total of 122 to 138 drills were deployed in 2009-10 out of which 55 were departmental drills. Apart from it, CMPDI continued the technical supervision of Promotional Exploration work undertaken by MECL in Coal Sector (CIL & SCCL areas) and monitored work of GSI for Promotional Exploration in Coal Sector (CIL area) on behalf of MoC.

1.1.2 In 2009-10, CMPDI and its contractual agencies took up exploratory drilling in 104

blocks/mines of 25 coalfields situated in 7 States. These coalfields are Raniganj (9 blocks/mines), Rajmahal (1), Jharia (4), W.Bokaro (1), Ramgarh (2), North Karanpura (1), Auranga (1), Tawa Valley/Pathakhera (3), Pench Kanhan (6), Kamptee (3), Nand-Bander (2), Wardha (10), Singrauli (8), Sohagpur (15), Sendurgarh (1), Johilla (1), Mand Raigarh (8), Korba (6), Hasdo-Arand (1), Bistrampur (5), Lakhanpur (1), Sonhat (1), Talcher (8), Ib Valley (3) and Makum (3 blocks). Out of 104 blocks/mines, 16 were Non-CIL/Captive blocks, 1 Promotional block and 87 CIL blocks/mines. Departmental drills of CMPDI took up exploratory drilling in 76 blocks/mines, contractual agencies (tendering/MOU) in 19 blocks and State Govts in 9 blocks/mines.

Highlights

CMPDI has achieved a new record in the field of exploration. CMPDI along with various agencies under its supervision has carried out about **5.22 lakh metres of drilling** during 2009-10, which is an all time high achievement, registering a **growth of 58%** over previous year by adopting a multi pronged strategy viz. induction of new drills/high capacity drills, replacement of old drills, opening of new camps, entering MoU with MECL and engaging Govt. and Private agencies for exploration.

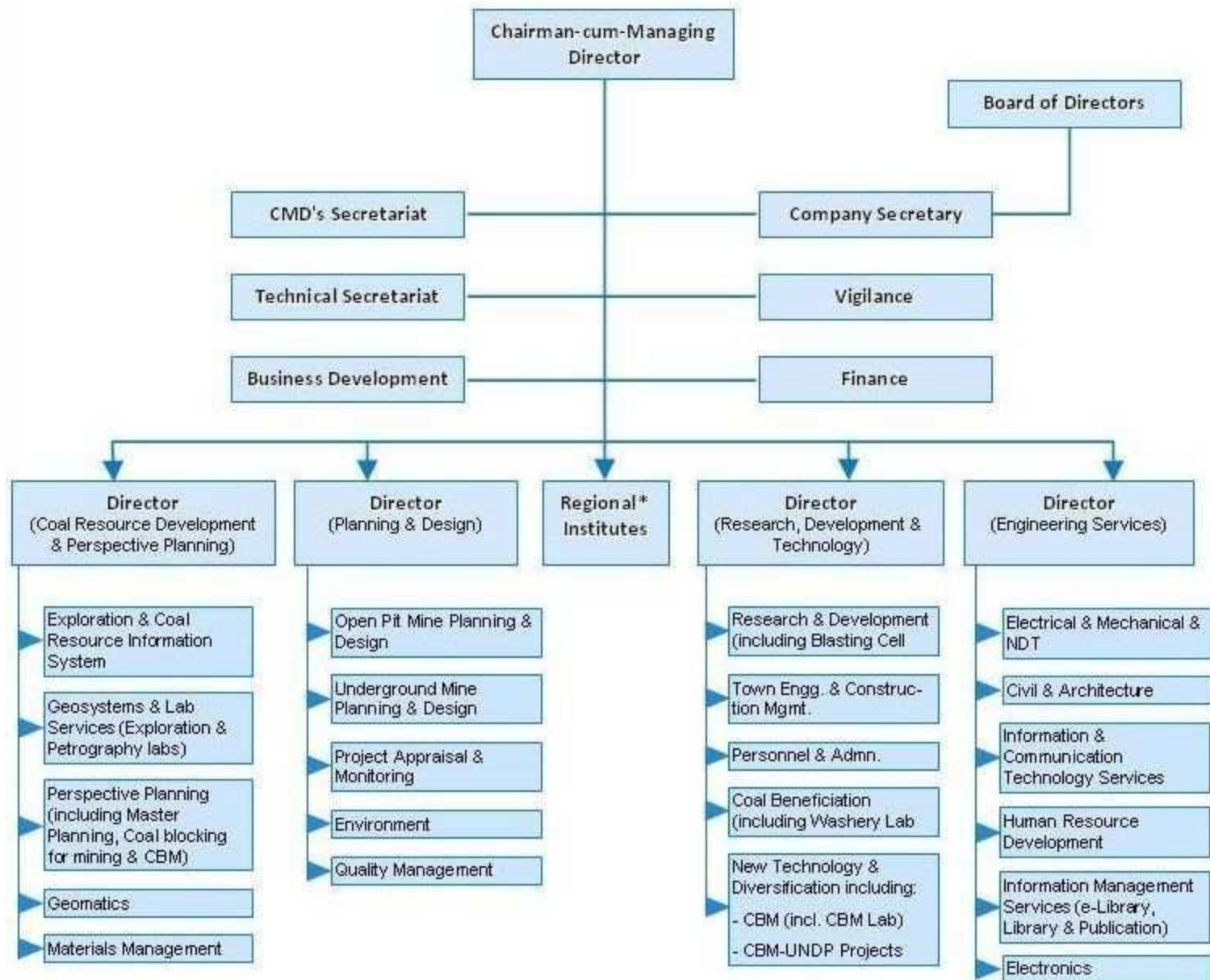
- **Exploratory drilling has been carried out in 102 blocks/mines spread over 25 Coalfields in 7 States** by CMPDI and its contractual agencies. Apart from it, GSI & MECL have also taken up Promotional drilling in coal sector and has taken up regional exploration of 16 blocks in 8 coalfields.
- CMPDI drills have achieved 2.64 lakh metres of drilling as compared to 2.28 lakh metre achieved in previous year. The average **productivity of CMPDI's drills has also increased to 413 metre/drill/month** as compared to 397 metre/drill/month achieved last year registering a growth of 4%.
- One **new drilling camp at Korba** (in SECL area) has become operational.
- **18 Geological Reports** have been prepared by CMPDI establishing about **2.6 Billion Tonnes** of coal resources to the '**Proved category**'.
- 14 Geological Reports have been prepared under Promotional Exploration (by MECL & GSI) estimating 4.6 Billion Tonnes of new coal resources in indicated/inferred category.
- **35 Project Reports** have also been prepared with **capacity addition of about 72 Mt per year**.

Services offered by CMPDIL IN EXPLORATION

- Drilling (Coring & Non-coring)
- Topographical Survey
- In-seam Seismic survey
- High Resolution Shallow Seismic (HRSS) Reflection
- Seismic Refraction
- Geo-technical studies
- Geo-physical survey (borehole & surface)
- Geo-chemical testing
- Hydro geological studies
- Water budgeting and management
- Groundwater budgeting and management
- Water well drilling, development and construction
- Aquifer testing
 - Water supply for rural and urban population
 - Mine inflow study
 - Reserve Assessment
 - Modeling
 - Documentation
- Coal Quality assessment
- Interpretation of Stratigraphy & structure
- Coal / Mineral Resource Evaluation
- Geological Modeling

Agency/ Command Area	Coalfield	Block	Drilling in 2009-10 (m)
A. CMPDI (Departmental):			
ECL	Raniganj	Tamla	1509
CCL	Auranga	Rajbar ABC	14372
WCL	Kamptee	Bharatwada	5396
	Nand-Bander	Mandwa	5010
SECL	Sohagpur	Malachua	3280
		Panwari	5878
MCL	Talcher	Bankui	19219
		Mahanadi	2568
	Ib Valley	Prajapara	22272
Sub-total A (Departmental):			79,504
B. Outsourcing through open tendering:			
ECL	Rajmahal	Kayda-Chaudhar- Gariapani	19443
SECL	Mand Raigarh	Syang Central 'A'	20517
		Syang East 'B'	16737
		Syang North West	21718
		Syang South	21465
	Chirra North	26673	
	Hasdo-Arand	Morga South	13549
Sub-total B (Outsourcing):			1,40,102
Grand Total of Drilling in Non-CIL blocks:			2,19,606

Note: Many blocks are now proposed to be retained by CIL.



** For various functional areas, the Regional Directors would report to respective Directors.*

Capital Budget, Revenue Budget, Manpower Budget, Recruitment, Promotion & Transfer to be approved centrally.