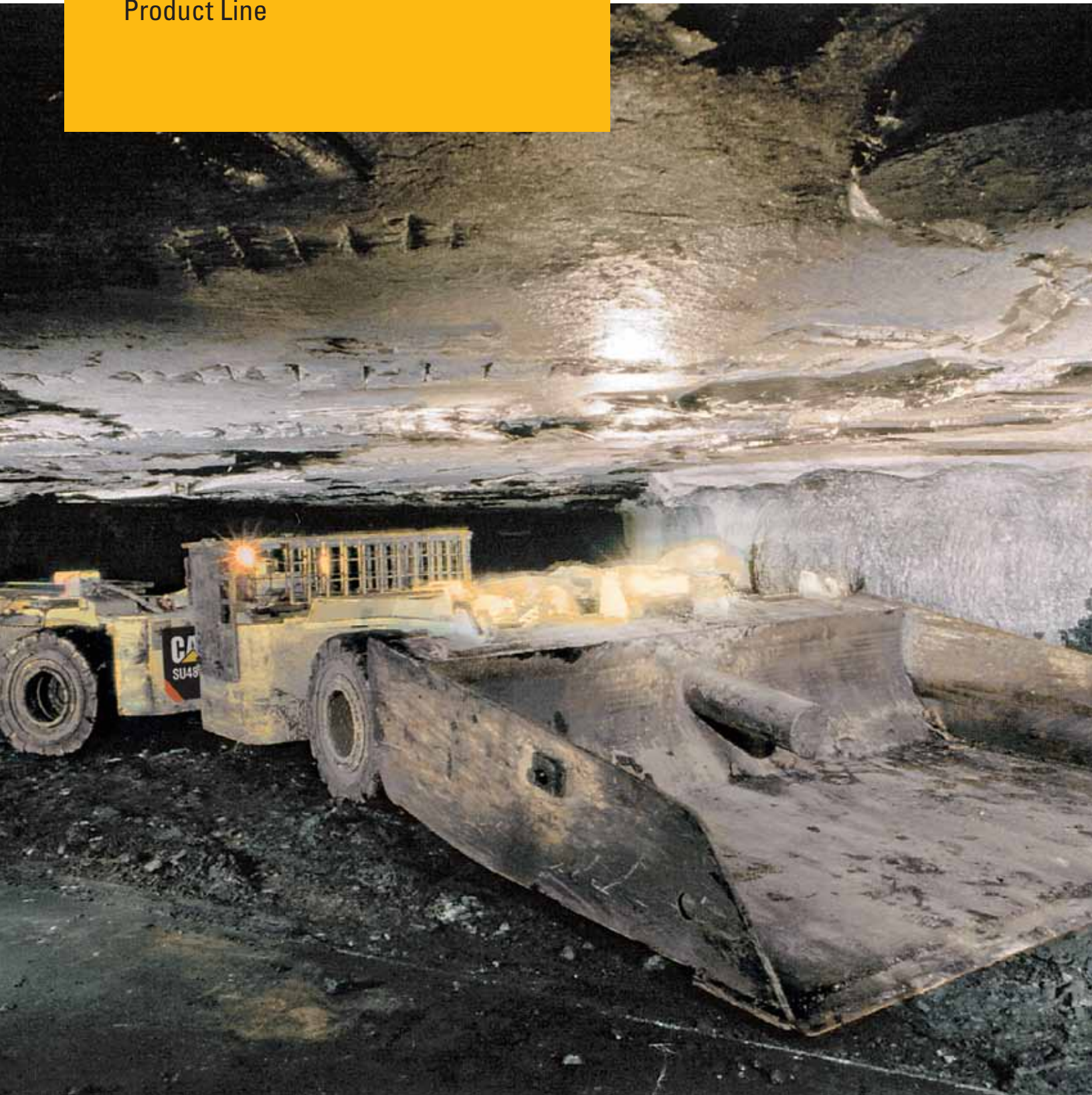


Scoops

Product Line





The Section Workhorse

With over 40 years' experience and over 6,500 battery-powered units produced, the Cat® scoop is the obvious choice for a low-maintenance, high-productivity utility vehicle. The products from the No. 1 manufacturer of battery-powered mining machinery are setting the pace in efficient and reliable underground utility vehicles. The SU488 is the strongest and most rugged low-profile scoop ever built.

Cat® Scoops Features

- Oversize center sections
- Tape switch type emergency stops
- Wet-disc service brakes
- Cat IGBT electric controllers (optional HIPAC 10 AC drive)
- Multi-purpose contoured bottom bucket
- Planetary wheel drives
- Ground-level battery change system

The Cat Control System

We have led the way in increasing the productivity of battery powered mining equipment. Our control system eliminates commutating coils and capacitor banks and is able to provide a microprocessor-based motor controller. Using the dash-mounted diagnostic display and the handheld calibrator/diagnostic unit, difficulties can be overcome in short order.



State-of-the-Art Drive Technology

Optional HiPAC 10 VFD

The Cat HiPAC 10 is a DC to AC variable-frequency inverter control that drives high-performance AC electronic motors, which have a superior speed-torque characteristics. It is up to 14% more efficient than traditional DC motors. This means higher loaded tram speeds, more responsive hydraulic functions and more work per battery charge.

Mine Duty, 37 kW/50 hp Tram Motor

The scoop is equipped with a 50 hp, 110 V DC, class H insulation series wound traction motor. An Optional 100 hp AC tram motor is available with the HiPAC 10 VFD Control System.



With the ability to engage a battery from below grade, and to vary the ground clearance of the battery in undulating conditions, the Cat® Scoop is able to thrive in varying mining environments.

Explosion Proof, 11.9 kW/16 hp Pump Motor

All Cat utility scoops feature large hydraulic fluid reservoirs for maximum cooling capacity. Each reservoir is equipped for easy fluid-level monitoring. The machines are provided with 10-micron return line filtration and a magnetic particle sump strainer. For long life and dependability, the main implement pumps are helical gear, fixed displacement. Dash-mounted gauges provide the operator with continuous monitoring of the status of the hydraulic system. An optional 35 kW (47 hp) AC Pump motor with HiPAC 10 VFD control system is available.

Heavy-duty Drive Train

With options and features like full inboard planetary axles and bulletproof outboard and hub-end planetary axles, the Cat Scoop is the right combination for any application. For unparalleled speed and maximum reliability, the SU488 offers dual 37.3 kW (50 hp) tram motors.

On-demand, Axle Difflock

Four-wheel drive for when conditions get tough, planetary axles with wet disc service brakes, helical, parallel gearbox, spring applied, hydraulically-released parking brakes and other features all combine to provide rock climbing gradeability.



Human-factor Engineered Operator's Compartment

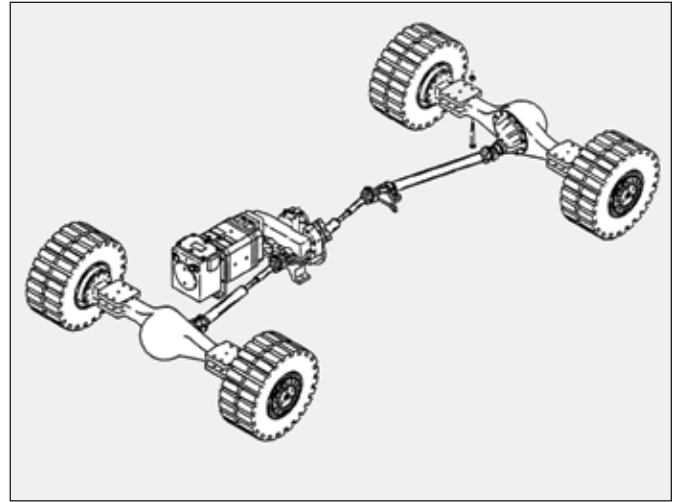
For long-shift productivity, operator comfort is paramount for maintaining a safe working environment. At Caterpillar, ergonomics is not just another marketing buzzword. Controls are placed in a logical, easy-to-reach position and are easily operated from the fully padded, adjustable seat.

Heavy-duty Center Section

To provide superior stability in tough conditions, the scoop offers ball bearing oscillation. The problems associated with three-point-hitch style oscillation are eliminated with the robust design of the pivot section. High-strength, low-alloy steel bearing attachment faces and quality ANSI/AWS welding help provide the reliability that our customers demand. The articulation joint features hardened spherical bushings to ensure even load distribution to the high-strength, hardened articulation pins.

Environmentally Responsible

The Cat Diesel Power pack, in both permissible and non-permissible configurations, is the cleanest power pack available for the underground mining environment. Alternate engines are available depending on application and geographical regions.

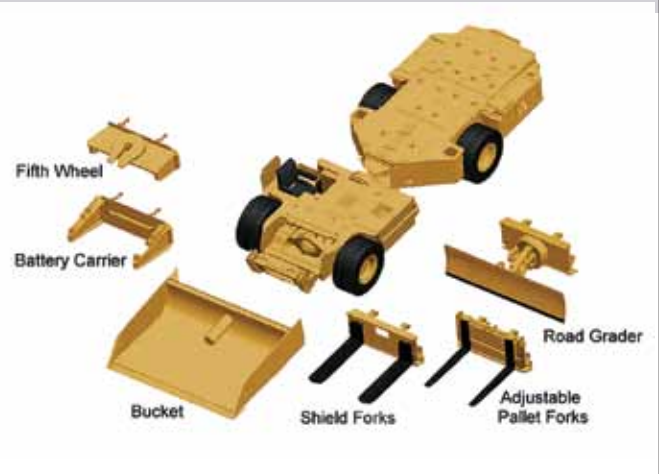


Optional Features

- Vertical lift and tilt
- Dual tram motors
- Battery sizes from 550 to 1,500 Amp/Hrs
- Two-speed winch (SU488 & SU636)
- Heavy-duty, forged steel fork frame
- Special rock bucket
- Hydraulically operated cab assembly (SU488 and SU636)
- Cat Control Stick
- Diesel versions available
- AC Motors with VFD Control System

Quick Attach System

For additional flexibility, the scoop quick attach system allows for speedy conversion from a fork machine for yard work to a section utility scoop.



Diesel Options

Cat diesel-powered equipment boasts the most efficient engines and powertrains available while ensuring the lowest levels of emissions. The SU488 D and SU482 DN are capable of operating for long distances at high speeds and are designed for challenging roadway conditions with steep gradients. Both units have SAHR Breaking systems and can be available for PA or WV operations.

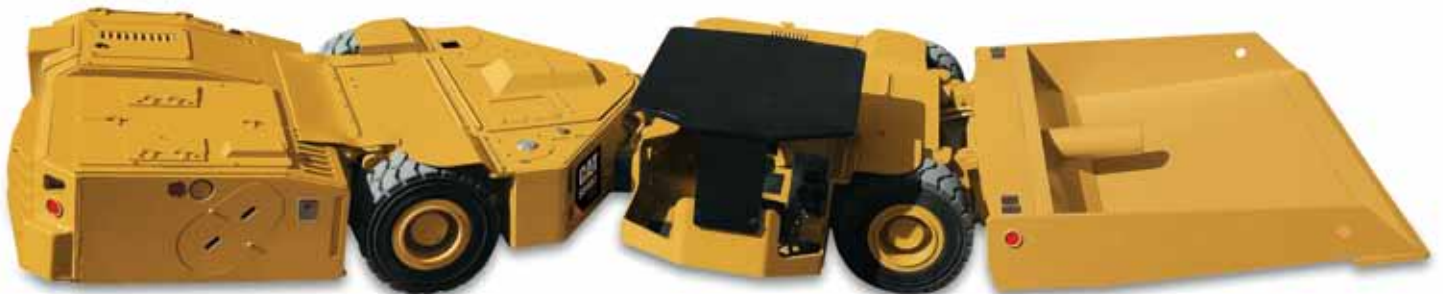
SU488 D

The new Diesel scoop offers an alternative to battery powered low seam utility vehicles.

- Four speed power shift transmission
- Optional XP diesel power pack
- The SU488 D can also be configured with a LHD lift mechanism

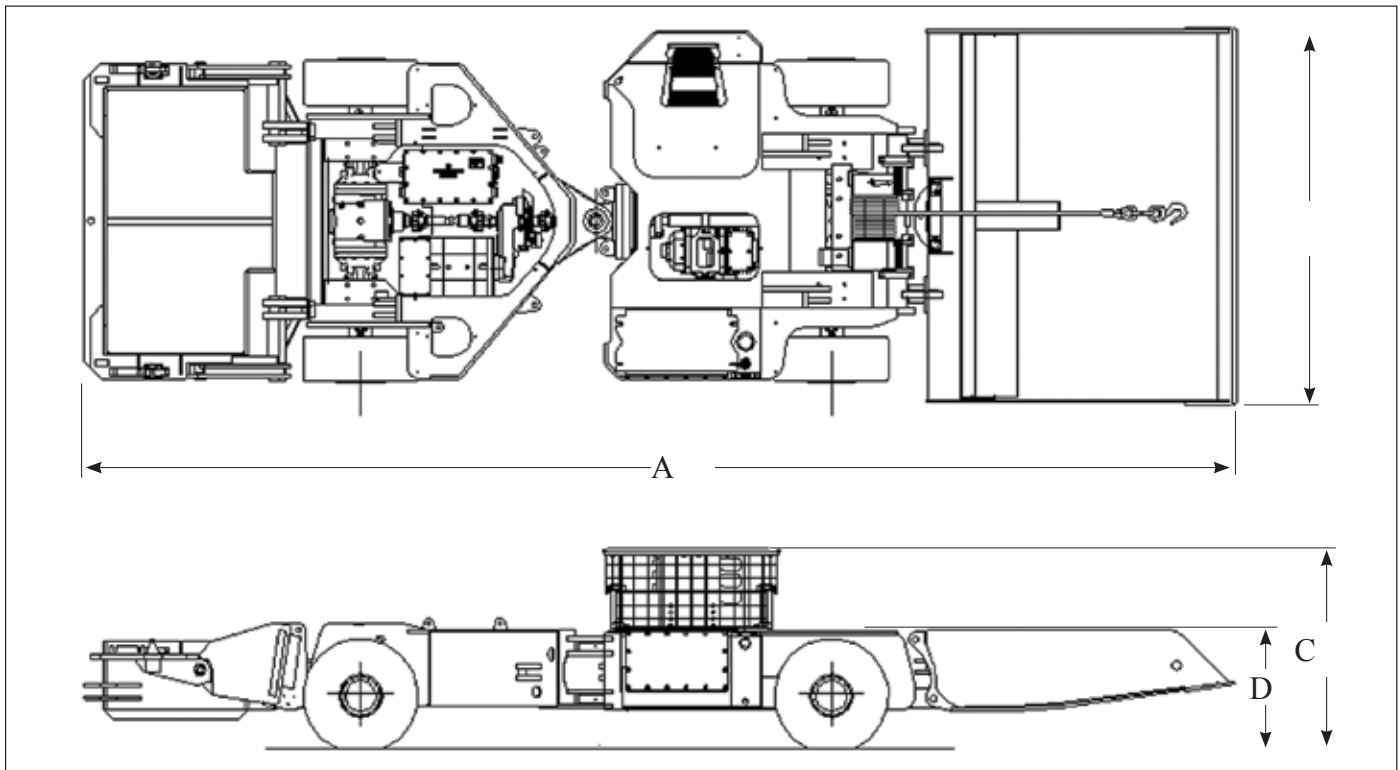
SU482 DN

- Three-speed power shift transmission
- Vertical articulation provides improved maneuverability



MODEL	Payload Capacity	A	B	C*	D*
SU482	4.5 tonnes 5.0 tons	8 760 mm 28 ft 9 in	2 920 mm 9 ft 7 in	864 mm 2 ft 10 in	635 mm 2 ft 1 in
SU482 DN	6.8 tonnes 7.0 tons	8 763 mm 28 ft 9 in	3 098 mm 10 ft 2 in	864 mm 2 ft 10 in	685 mm 2 ft 3 in
SU488 LHD	9.1 tonnes 10 tons	8 915 mm 29 ft 3 in	2 920 mm 9 ft 7 in	1 170 mm 3 ft 10 in	864 mm 2 ft 10 in
SU488 L	9.1 tonnes 10 tons	9 347 mm 30 ft 8 in	2 920 mm 9 ft 7 in	915 mm 3.0 ft	864 mm 2 ft 10 in
SU488 DN	14.5 tonnes 16 tons	8 788 mm 28 ft 10 in	2 997 mm 9 ft 10 in	1 170 mm 3 ft 10 in	864 mm 2 ft 10 in
SU488	14.5 tonnes 16 tons	8 915 mm 29 ft 3 in	2 920 mm 9 ft 7 in	1 245 mm 4 ft 1 in	965 mm 3 ft 2 in
SU488 DM	14.5 tonnes 16 tons	9 576 mm 31 ft 5 in	2 920 mm 9 ft 7 in	1 170 mm 3 ft 10 in	965 mm 3 ft 2 in
SU636	22.7 tonnes 25 tons	11 074 mm 36 ft 4 in	2 920 mm 9 ft 7 in	1 676 mm 5 ft 6 in	1 092 mm 3 ft 7 in

*Height depending on tire option



Scoops – Product Line

For more complete information on Cat products, dealer services, and industry solutions, visit us on the web at mining.cat.com and www.cat.com

© 2011 Caterpillar Inc.
All rights reserved

AEXQ0615

Materials and specifications are subject to change without notice. Featured machines in photos may include additional equipment. See your Cat dealer for available options.

CAT, CATERPILLAR, their respective logos, "Caterpillar Yellow" and the "Power Edge" trade dress, as well as corporate and product identity used herein, are trademarks of Caterpillar and may not be used without permission.

