



Cat[®] 8200

DRAGLINE RANGE

Specifications

Weights – 300k RSL*

Boom Length @ 39°	100 m	328 ft
Net Weight, domestic, approximate with bucket	3 447 302 kg	7,600,000 lb
Working Weight, approximate with bucket	3 836 030 kg	8,457,000 lb
Ballast Weight, approximate	388 729 kg	857,000 lb

Weights – 400k RSL*

Boom Length @ 39°	100 m	328 ft
Net Weight, domestic, approximate with bucket	3 492 661 kg	7,700,000 lb
Working Weight, approximate with bucket	4 123 155 kg	9,090,000 lb
Ballast Weight, approximate	630 493 kg	1,390,000 lb

*Net weight, ballast weight, working weight kPa (psi) bearing pressure will vary with boom length, angle, and rated suspended load. Shipping weight subject to ±5% variance.

Electrical

IGBT-AFE Inverter Cabinets	2 Water-Cooled*	
Hoist Motors	3 or 4 × 1230 kW	3 or 4 × 1,650 hp
Drag Motors	3 or 4 × 1230 kW	3 or 4 × 1,650 hp
Swing Motors	3 or 4 × 932 kW	3 or 4 × 1,250 hp
Walking Motors	2 × 932 kW	2 × 1,250 hp

*Motor combinations and IGBT-AFE Inverter Cabinets vary with boom length, angle, and rated suspension load.

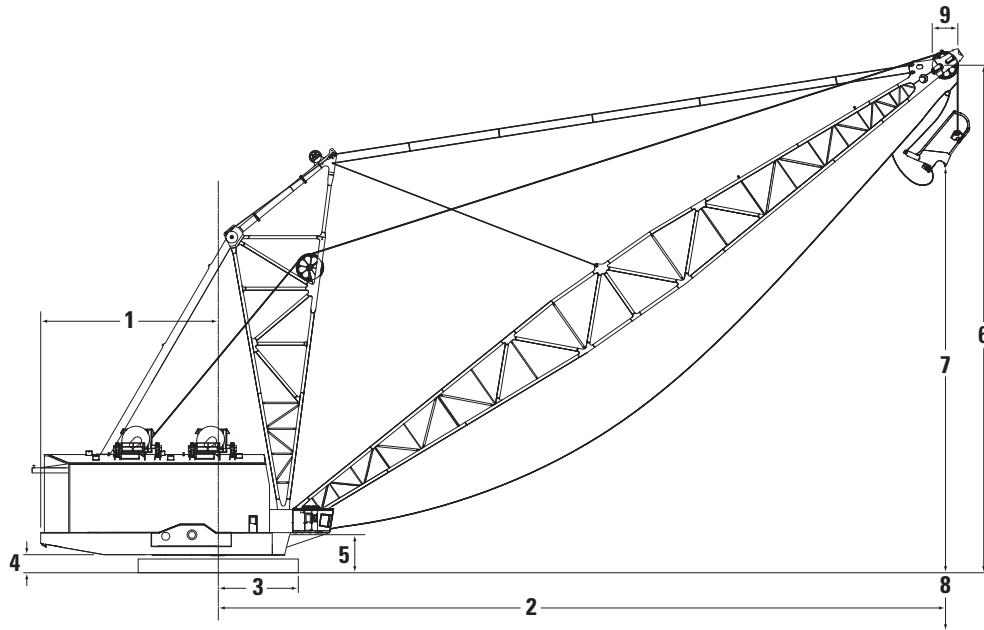
Base

Outside Diameter	19.5 m	64 ft
Bearing Area	298.9 m ²	3,217 ft ²
Bearing Pressure	131-144.8 kPa	19-21 psi
Circle Rail Diameter	15.2 m	50 ft
Rollers (average diameter)	30.5 cm	12 in
Swing Gear (pitch diameter)	13.03 m	42 ft 9 in

Walking Mounting

Shoe Width and Length	3.9 m × 19.8 m	13 ft × 65 ft
Combined Bearing Area	157 m ²	1,690 ft ²
Bearing Pressure (@ 80% of working weight)	191.7-208.5 kPa	27.80-30.24 psi
Overall Width Over Shoes	29.3 m	96 ft
Length of Step (approximate)	2.26 m	7 ft 5 in

Dragline – 8200, Dragline Range



Dimensions (All dimensions are approximate.)

① Clearance Radius	21.6 m	71 ft
③ Boom Foot Radius	6.6 m	21 ft 6 in
④ Clearance Height	2.2 m	7 ft 3 in
⑤ Boom Foot Height	4.7 m	15 ft 6 in
⑨ Point Sheave Pitch Diameter	304.8 cm	120 in

Boom Length	Boom Angle	② Operating Radius	Rated Suspension Load		⑥ Boom Point Height		⑦ Dumping Height		⑧ Digging Depth		DRAG		HOIST									
					m	ft	m	ft	m	ft	m	ft	Drum Diameter	Number	Rope Diameter	Drum Diameter	Number	Rope Diameter				
m	ft	m	ft	kg	lb	m	ft	m	ft	m	ft	cm	in	cm	in	cm	in	cm	in			
100	328	39	85.6	281.0	181 437	400,000	69.1	226.8	48.2	158	39.6	130	254	100	2	9.53	3.75	254	100	2	9.53	3.75
100	328	35	90.1	295.5	181 437	400,000	62.6	205.4	41.8	137	46.3	152	254	100	2	9.53	3.75	254	100	2	9.53	3.75
100	328	32	92.7	304.0	172 365	380,000	58.7	192.7	38.1	125	49.7	163	254	100	2	9.53	3.75	254	100	2	9.53	3.75
100	328	39	85.6	281.0	136 078	300,000	69.1	226.8	48.2	158	39.6	130	254	100	2	8.25	3.25	254	100	2	8.25	3.25
100	328	35	90.1	295.2	136 078	300,000	62.6	205.4	41.8	137	46.3	152	254	100	2	8.25	3.25	254	100	2	8.25	3.25
100	328	32	92.7	304.0	136 078	300,000	58.7	192.7	38.1	125	49.7	163	254	100	2	8.25	3.25	254	100	2	8.25	3.25

For more complete information on Cat products, dealer services, and industry solutions, visit us on the web at www.cat.com

© 2012 Caterpillar
All Rights Reserved
Printed in U.S.A.

Materials and specifications are subject to change without notice. Featured machines in photos may include additional equipment. See your Cat dealer for available options.

CAT, CATERPILLAR, SAFETY.CAT.COM, their respective logos, "Caterpillar Yellow" and the "Power Edge" trade dress, as well as corporate and product identity used herein, are trademarks of Caterpillar and may not be used without permission.

AEHQ6866 (08-12)
Replaces AEHQ6712 and AEHQ6713

