



Cat® 8000

DRAGLINE RANGE

Specifications

Weights*

Boom Length	76.2 m	250 ft
Net Weight, domestic, approximate with bucket and ballast	1 451 000 kg	3,200,000 lb
Working Weight, approximate with bucket	1 751 000 kg	3,860,000 lb
Ballast Weight, furnished by customer	300 000 kg	660,000 lb
Boom Length	83.8 m	275 ft
Net Weight, domestic, approximate with bucket and ballast	1 474 000 kg	3,250,000 lb
Working Weight, approximate with bucket	1 792 000 kg	3,950,000 lb
Ballast Weight, furnished by customer	318 000 kg	700,000 lb

*Ballast requirements and net weight of machine varies with boom length and rated suspended load. Shipping weight subject to ±5% variance.

Electrical

Hoist Motors	2 × 1230 kW	2 × 1,650 hp
Drag Motors	2 × 1230 kW	2 × 1,650 hp
Swing Motors	2 × 477 kW	2 × 640 hp
Walking Motors	1 × 1230 kW	1 × 1,650 hp

Base

Outside Diameter	15.24 m	50 ft
Bearing Area	182.37 m ²	1,963 ft ²
Circle Rail Diameter	15.24 m	50 ft
Rollers (average diameter)	254 mm	10 in
Swing Gear (pitch diameter)	12.95 m	42 ft 6 in

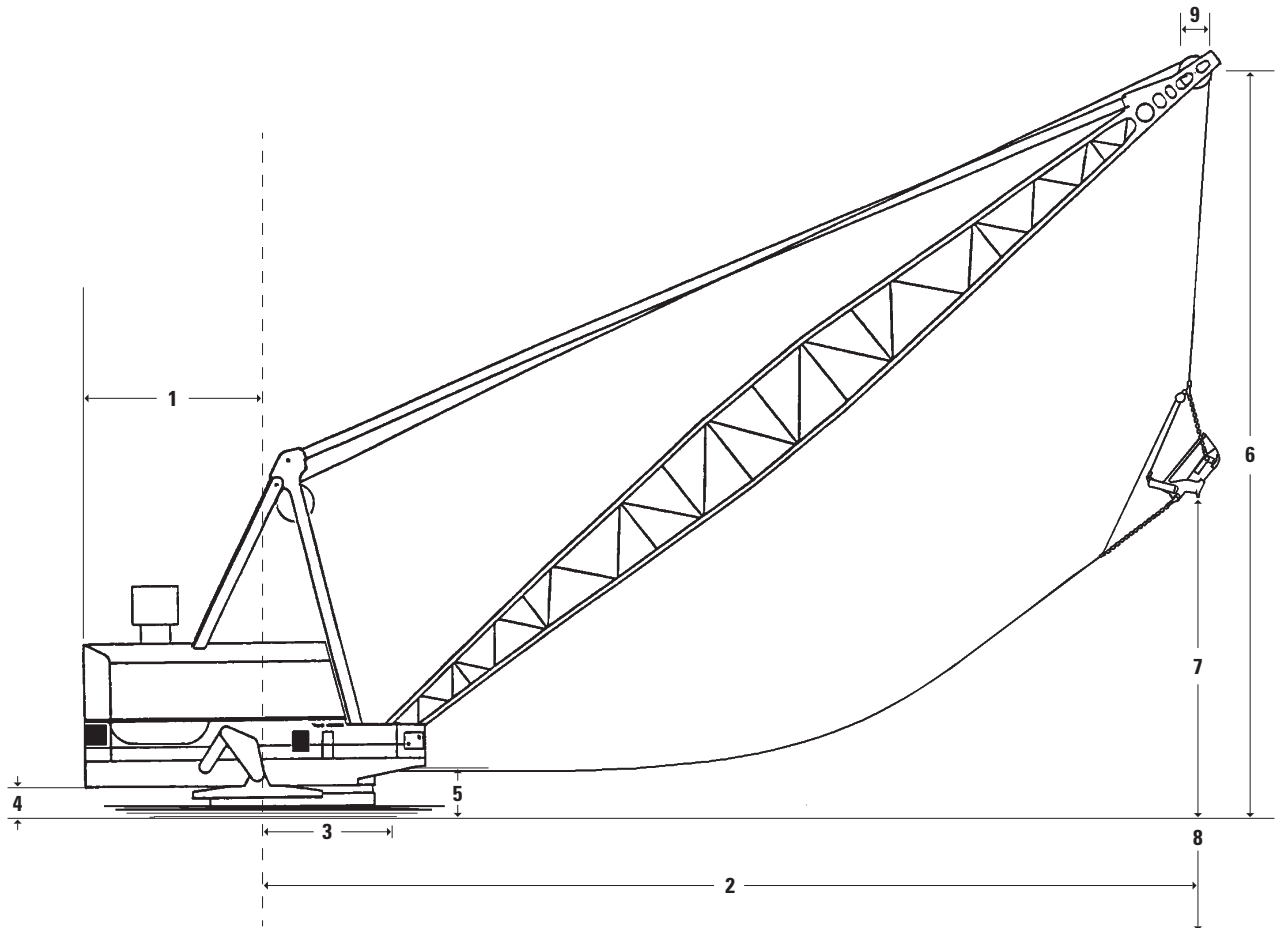
Walking Mounting

Shoe Width and Length	2.7 m × 14.6 m	9 ft × 48 ft
Combined Bearing Area	80.3 m ²	864 ft ²
Overall Width Over Shoes	21.6 m	71 ft
Length of Step (approximate)	2.1 m	7 ft
Walking Speed (approximate)	0.24 km/h	0.15 mph

Revolving Frame

Upper Machinery Frame (width × length)	13.1 m × 22.9 m	43 ft × 75 ft
Girder Depth	2.0 m	6 ft 8 in

Dragline – 8000, Dragline Range



Dimensions (All dimensions are approximate.)

① Clearance Radius	16.3 m	53 ft 6 in
③ Boom Foot Radius	6.2 m	20 ft 3 in
④ Clearance Height	1.75 m	5 ft 9 in
⑤ Boom Foot Height	4.1 m	13 ft 6 in
⑨ Point Sheave Pitch Diameter	228.6 cm	90 in

Boom Length	Boom Angle	② Operating Radius	Rated Suspension Load	⑥ Boom Point Height		⑦ Dumping Height		⑧ Digging Depth		DRAG			HOIST									
				m	ft	m	ft	m	ft	Drum Diameter	Number	Rope Diameter	Drum Diameter	Number	Rope Diameter							
				kg	lb	m	ft	m	ft	cm	in	cm	in	cm	in	cm	in					
76.2	250	32	71.9	236	95 200	210,000	44.5	146	29.3	96	44.2	145	216	85	2	7.0	2.75	216	85	2	7.0	2.75
83.8*	275*	38	73.2	240	93 900	207,000	55.8	183	40.8	134	39.0	128	216	85	2	7.0	2.75	216	85	2	7.0	2.75

*Note that the 83.8 m (275 ft) boom option has a mast.

For more complete information on Cat products, dealer services, and industry solutions, visit us on the web at www.cat.com

© 2012 Caterpillar
All Rights Reserved
Printed in U.S.A.

Materials and specifications are subject to change without notice. Featured machines in photos may include additional equipment. See your Cat dealer for available options.

CAT, CATERPILLAR, SAFETY.CAT.COM, their respective logos, "Caterpillar Yellow" and the "Power Edge" trade dress, as well as corporate and product identity used herein, are trademarks of Caterpillar and may not be used without permission.

AEHQ6867 (11-12)
Replaces AEHQ6467 and AEHQ6468

